



NON-FORMAL EDUCATION & DIVERSITY IN EUROPEAN YOUTH WORK

Non-Formal Education and Diversity in European Youth Work:
Subjects - Methods - Exchange

NON-FORMAL EDUCATION & DIVERSITY IN EUROPEAN YOUTH WORK

Non-Formal Education and Diversity in European Youth Work:
Subjects - Methods - Exchange

NOVI SAD, SERBIA
4th – 8th of July 2015
&
WEIMAR, GERMANY
28th October –
4th of November 2015

A project by:



EUROPÄISCHE
JUGENDBILDUNGS &
BEGEGNUNGSSTÄTTE
WEIMAR

Funded by:



JUGEND
für Europa

Nationale Agentur Erasmus+



Erasmus+

This project has been funded with support from the European Commission. This publication reflects the views only of the author, and the Commission cannot be held responsible for any use which may be made of the information contained therein.

INDEX

5. ABOUT THE PROJECT

6. PARTNER ORGANISATIONS

9. CONTACT MAKING EVENT

NOVI SAD, SERBIA / 4th – 8th of July 2015

14. TRAINING COURSE

WEIMAR, GERMANY / 28th Oct. – 4th of Nov.2015

19. EVALUATION MEETING

SUMMER/AUTUMN 2016

20.THE TRAINERS

22.PUBLISHER





DEAR PROJECT PARTNERS, DEAR PARTICIPANTS,

Hereby we are presenting you with first information on our common project, the three events on “Non-Formal Education and Diversity in European Youth Work” in a complete **Participants’ Guide or a so-called “Info pack”**.

The project line (overall duration 11 months) will consist of three main events:

The Contact Making Event “Non-Formal Education and Diversity in European Youth Work”, which will take place on **4th – 8th of July 2015 in Novi Sad**, Serbia in cooperation with ‘EDIT Centre’.

The Training Course for multipliers “Diversity conscious International Youth Work” will take place on **28th October – 4th of November 2015 in Weimar**, Germany under the roof of the European Youth Education and Meeting Centre (EJBW).

The Evaluation Meeting “Non-Formal Education and Diversity in European Youth Work” will happen in **summer or autumn 2016**. The place and date is not yet fixed because we will implement two additional Regional Experts Panels on the theme of the overall project in **springtime 2016**. Depending on the results for place and date of them we’ll fix the date for the Evaluation Meeting.



PROJECT DESCRIPTION

European societies have changed and are constantly changing- nearly all EU28 countries and as well as our neighbours from SEE and EECA are becoming so-called immigration societies ("Einwanderungsgesellschaften"). These are difficult processes - in nearly all European societies we are facing an ever-growing ground for racism, hate and nationalism - that's why we see these immigration societies as a "project" which cannot be "finalized". These new societies are not only characterized by the diversity and side-by-side of existing cultures but are always producing new forms of living together, overcoming the binary thinking of e.g. "German/migrant", "native/foreigner", or "normal/not normal" etc. But these societies produce tensions and demand a high level of competence from educators and youth workers - regardless of age, gender, origin etc., in dealing with these old and new differences.

In this regard, the main aim of the project is imparting knowledge on claims and causes of diversity and non-formal education within European Youth Work. The main subject for all planned elements is therefore the concept of diversity.

- **What is diversity? Where does the concept come from? What's behind it?**
- **What are our own attitudes and values?**
- **What are our own experiences and challenges with inclusion and diversity?**
- **Which role does (European) Youth work play? What are the strengths and weaknesses of our daily work with children & youth?**
- **What are the challenges, gaps, opportunities and possible solutions of social change?**

The recognition of different forms of discrimination is taken into consideration in order to go first steps towards a culture of acceptance and appreciation (of diversity). This will then serve as a platform in order to mutually create new places of learning, networking and gaining new partners for cooperation.

The objectives of the overall project are therefore:

- **to discuss and interchange former handling in youth work regarding the topic diversity**
- **to expose failures in the past and points of potential disinterest coming from the side of youth, while dealing with the topic of anti-discrimination**
- **to discuss new advantages that the diversity approach brings into anti-discrimination youth work and to dissemination of information**
- **to practice newly adopted methods on youth workers' experienced cases; to encourage participants to use them when planning and implementing activities with youth**
- **to discuss and understand the importance of visible dissemination of the results**
- **to share, discuss and create different opportunities of the usage of the diversity approach in anti-discrimination youth work, especially in the frame of the program Erasmus+/Youth in Action**
- **to encourage participants to reflect on and develop common intercultural/future cooperative projects and exchanges by putting the newly acquired knowledge, skills and attitudes into practice**



PARTNER ORGANISATIONS

The CME will gather 30 participants, the TC will gather 40 participants and the EM 30 participants from diverse European countries.

The following organizations are involved in the project:

Country	Partner Organisation	Description
Albania	Center of Non-formal Education and Lifelong Learning (CNELL) www.cnellalbania.weebly.com	<ul style="list-style-type: none"> • NGO, association • caring for non-formal Education/ Lifelong Learning • for age of 5-65
BiH	"Youth Volunteers" www.mladiholonteri.org	<ul style="list-style-type: none"> • association • caring for volunteerism for Youth
BiH	Red Cross of Municipality of Novo Sarajevo www.redcrossns.org	<ul style="list-style-type: none"> • NGO, association • helping the society, first aid, dissemination, anti-trafficking, reproductive health and STD-s, etc. • for age of 15-30, also for elderly people
Bulgaria	National association of resource teachers (NART) www.narubg.org	<ul style="list-style-type: none"> • association • caring for inclusion for youth with different abilities
Czech Rep.	Tmelnik www.tmelnik.cz	<ul style="list-style-type: none"> • civic association • caring for educational, social and cultural life or active participation for youth
Estonia	Eesti People to People www.ptpest.ee	<ul style="list-style-type: none"> • NGO (part of People to People International) • caring for peace through understanding for Youth and adult learners
Estonia	INVOLVED ngo/mtü www.involved.ee	<ul style="list-style-type: none"> • center of mobilities • caring for active participation for youth and people working with youth
France	Association Migration Solidarité et Échanges pour le Développement (AMSED) www.amsed.fr	<ul style="list-style-type: none"> • association • caring for cultural exchange for all ages
Germany	EJBW www.ejbweimar.de	<ul style="list-style-type: none"> • European Youth Education and Meeting Centre foundation • caring for civic and historical education for youth and multipliers in youth work
Germany	Gustav-Stresemann-Institut Bonn (GSI) www.gsi-bonn.de	<ul style="list-style-type: none"> • European Education and Congress Centre • caring for civic education, professional training and discussion for all ages



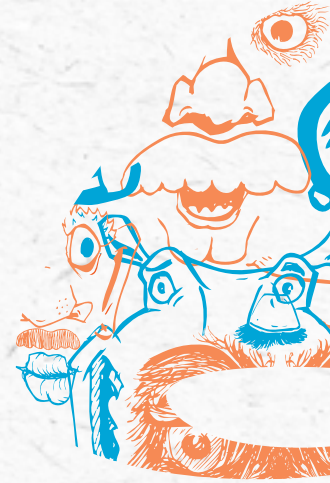


Country	Partner Organisation	Description
Germany	Jugendkulturarbeit e.V. www.jugendkulturarbeit.eu	<ul style="list-style-type: none"> • cultural and civic education institution • caring for theatre work, civic education, • international projects, EVS/ sending and hosting organisation, • for kids and youth
Greece	Educational Eduvation www.educational-innovation.org	<ul style="list-style-type: none"> • NGO • innovation in education and training • for youth and educators/trainers
Greece	Youthnet Hellas www.youthnet.gr	<ul style="list-style-type: none"> • Youth NGO • caring for citizenship, promotion of youth mobility • for age of 15 – 35
Hungary	Compass Organization for the European Youth Community (COMPASS) www.compassgyesulet.hu	<ul style="list-style-type: none"> • Youth Center/Youth Information Office • caring for integration in the system of opportunities of EU, to become an active member, volunteering activity • for age of 6 – 30
Italy	ComeUnaMarea Onlus www.comeunamarea.eu	<ul style="list-style-type: none"> • cultural association • caring for active citizenship • for age of 16 – 30
Kosovo	Center for Economic and Social Development (CESD) www.uiliria.org	<ul style="list-style-type: none"> • Youth Organization • caring for increasing Youth Employment • for age of 18 – 27
Lithuania	RJOS "Apvalus stalas" www.lyderiai.net	<ul style="list-style-type: none"> • regional union of youth organizations • encourage local initiatives and active citizenship • for age of 13 – 30
Macedonia	Association for Education and Art STUDIO 212 TETOVO studio212.macedonia@gmail.com	<ul style="list-style-type: none"> • NGO, association • education and Arts, transnational cooperations in region • for youth and adults
Poland	Fundacja Rodowo www.rodowo.pl	<ul style="list-style-type: none"> • NGO, foundation • caring for international youth exchange, non-formal education, active local employment politics and initiatives • for youth and adults
Portugal	GABINETE DA JUVENTUDE Montijo www.epmontijo.edu.pt	<ul style="list-style-type: none"> • NGO, youth office • caring for European Internships programs under the Lifelong Learning Programme • for all ages
Portugal	Dinamo www.dinamo.pt	<ul style="list-style-type: none"> • local youth NGO • caring for Democratic Citizenship and Human Rights Education • for young people and youth workers
Romania	Support for Youth Development www.s4yd.ro	<ul style="list-style-type: none"> • NGO • caring for bringing people together • for Youth

Country	Partner Organisation	Description
Serbia	EDIT Centre www.edit.org.rs	<ul style="list-style-type: none"> • NGO • for Education, Development, Information & Training for young people
Slovenia	Zavod Nefiks www.talentiran.si	<ul style="list-style-type: none"> • youth NGO • caring for non formal learning for age of 15 – 30
Sweden	Integration För Alla (IFALL) www.integrationforalla.se	<ul style="list-style-type: none"> • meeting place • caring for integration for immigrants and refugees



Contact Making Event NOVI SAD, SERBIA 4th – 8th of July 2015



THE OBJECTIVES

- gathering all participating partner promoters and their responsible staff members in order to get to know each other better
- provide a platform for gaining knowledge on the theme “diversity”
- exchange experiences in the field
- share expectations towards the project implementation
- discuss all project elements including the detailed planning of all following events and taking decisions on further implementation

PARTICIPANT'S PROFILE

- older than 18 years
- fully available to attend the CME from 4th of – 8th of July 2015
- with strong motivation and interest in the themes Youth Work and Diversity
- experienced in Youth Work / Social Work (with the capability to make decisions on general orientation), e.g. engaged as youth worker / educator / facilitator / project manager / board member
- able to make agreements on behalf of its sending organisation
- having a very good command of English

APPLICATION PROCESS

Applications are accepted through the partner organisations.
A participation fee visible in the list below is charged for participation in the CME.
The amount is paid in cash by the participant on the spot (arrival day, registration and check in).



TRAVEL COSTS

According to the new rules within the Programme Erasmus+ / Youth in Action we will reimburse the travel costs for the CME on the basis of the cheapest possibilities, e.g. second class railway tickets, APEX-flights etc., accompanied by the receipt of complete and original tickets, invoices, bills, receipts, boarding cards etc. upon a certain “contribution to the travel costs of participants, from their place of origin to the venue of the activity and return”.

This contribution is “based on the travel distance per participant. Travel distances must be calculated using the distance calculator supported by the European Commission”. Here you find the maximum contribution to travel costs for ONE participant per country from home town to Novi Sad and back:

Country	Partner Organisation	Number of participants	Fee	Max. contribution per person (€)
Albania	Center of Non-formal Education and Lifelong Learning	1	25	180
BiH	Association “Youth Volunteers’	1	25	180
BiH	Red Cross of Novo Sarajevo	1	25	180
Bulgaria	National association of resource teachers (NART)	1	35	180
Czech Rep.	Tmelnik	1	35	275
Estonia	Eesti People to People	1	35	275
Estonia	IINVOLVED ngo/ mtü	1	35	275
France	AMSED	1	45	275
Germany	EJBW	2	45	275
Germany	Gustav-Stresemann Institut Bonn (GSI)	2	45	275
Germany	Jugendkulturarbeit e.V.	1	45	275
Greece	Educational Eduvation	1	35	275
Greece	YouthNet Hellas	1	35	275
Hungary	COMPASS	1	35	275
Italy	ComeUnaMarea Onlus	1	45	275
Kosovo	Center for Economic and Social Development (CESD)	1	25	180
Lithuania	RJOS "Apvalus stalas"	1	35	275
Macedonia	Association for Education and Art STUDIO 212 TETOVO	1	25	180



Country	Partner Organisation	Number of participants	Fee	Max. contribution per person (€)
Poland	Fundacija Rodowo	1	35	275
Portugal	GABINETE DA JUVENTUDE Montijo	1	45	360
Portugal	Dinamo	1	45	360
Romania	Support for Youth Development	1	35	275
Serbia	EDIT Centre	1	25	-
Slovenia	Zavod Nefiks	1	35	180
Sweden	IFALL	1	45	275



PROGRAMM

Saturday, 4.7.	Sunday, 5.7.	Monday, 6.7.	Tuesday, 7.7	Wednesday, 8.7.
	opening & introduction	aim & objectives of the project	discussion about the programme of the planned Evaluation Meeting	open questions & final evaluation
arrival	'The Diversity Approach'	discussion about the programme of the planned Training Course	visiting local NGOs	departure



CHECK LIST FOR TRAVEL REIMBURSEMENT

REGULAR AIR TICKETS MUST BE ACCOMPANIED

- by the original invoice (signed and stamped)/receipt/pay order/proof of payment
- by the boarding pass (the small ticket stub you receive before boarding the plane)
- the prices stated in the invoices, receipts etc. must coincide with the price on the ticket.

E-Tickets must be

- printed out and include your name, the exact fare you paid, details of your flight on the same page
- be provided along with the credit card receipt for the payment or a copy of your bank statement (clearly showing the payment has been made)
- given in with the boarding pass (the small ticket stub you receive before boarding the plane)

NOTE: Some airlines print 'passenger receipt' at the top of the cardboard ticket. It is not accepted as a receipt of proof of payment. Therefore, if you book your tickets online, please, make sure to print out the e-mail you receive from the airline company upon the payment, stating how much and how you paid.

TRAIN/BUS TICKETS MUST SHOW VISIBLE

- arrival and departure time as well as the price (+invoices if available)

OTHER IMPORTANT DETAILS:

- **Booking paper alone is not enough (we need the invoices)**
- **Missing or lost tickets are not reimbursed**
- **Any costs for taxi are not reimbursed**
- **Return tickets must be bought in advance before the journey**

Following the guidelines of the Erasmus+/YIA Programme and internal regulations the travel must be released by the participants on the direct way within maximum 2 days. In case of long pauses or indirect routes (holiday travel), there is no reimbursement of travel costs! Reimbursement is done in Euro.

After the CME, please send us back all your complete travel documents in ORIGINAL by post mail as well as your bank account details (name of account holder, name of the bank, IBAN code, BIC/SWIFT code) until July, 24th 2015 to:

Europäische Jugendbildungs- und
Jugendbegegnungsstätte Weimar (EJBW)
Markus Rebitschek
Jenaer Str. 2/4
D-99425 Weimar, Germany

TRAVELLING TO NOVI SAD, HOTEL PUTNIK

Ognjanovića 24, 21000 Novi Sad, Telefon: 021 66 15 555 / Fax: 021 422 652, e-mail: info@hotelputnik.rs www.hotelputnik.rs

ARRIVAL BY PLANE

From Belgrade airport Nikola Tesla to Belgrade city-center:

You have exchange offices at the airport or around the train and bus station. You can use the shuttle bus (called A1) from the airport to the Central Train and Bus station (Autobuska stanica Beograd) in Belgrade (300 DIN one way to buy in the bus ~3,00 €). The Airport bus runs from the airport to the main bus station from 7:00 to 22:00 every 15-20 min. Furthermore Bus line 72 runs twice an hour to the city center and costs max. 150 dinars (~ €1,50) if you buy it directly by the busdriver or 89 dinars at the shop inside the departure hall that sells food and newspapers. The trip takes around 30 minutes. For more information:

www.beg.aero/en/strana/8811/bus;

http://www.beg.aero/upload/map_timetable.jpg

From Belgrade to Novi Sad SA:

Belgrade bus station is next to the central train station in Železnička 4. It takes around 1h30 to reach Novi Sad, buses are running every 20-30 minutes from 4:30 am to 22:35 pm (last bus!), one-way costs 6-10€. One possible time is 14:10 to 15:35.

For more information:

www.bas.co.rs/basweb_eng/RedVoznje.aspx?lng=en;

saobracaj@bas.co.rs,

Bastours, Železnička 4, tel: +381 11 2636 299

ARRIVAL BY TRAIN

There are 14 departures per day from Beograd to Novi Sad. The train ticket in one direction is from 2.50 - 4€.

<http://w3.srbail.rs/zsredvoznje/?lang=en>

From Novi Sad SA to Hotel Putnik:

In 50 meters distance at the city bus station take bus no 4. The bus ticket you have to buy in the bus (55 RSD, ~ 0,40€). Get off on the 5th city bus station in the Centre (Boulevard Zarko Zrenjanin). Then turn on the right side and go 200 meters straight through Boulevard Mihajla Pupina to Hotel Putnik.

ACCOMMODATION

We'll stay in the facilities of the central hotel "Putnik" in the city center of Novi Sad in double bed rooms including full board, snacks, coffee & tea. Within the hotel several seminar rooms, workshops for creative work and free space for activities are at disposal.

www.hotelputnik.rs

Our host will be the EDIT Centre: www.edit.org.rs.



Training Course

WEIMAR, GERMANY

28th October – 4th of November 2015

THE OBJECTIVES

- skills in appreciative and constructive approach with diversity, participation and identity
- discuss and interchange former handling in youth work regarding the topic diversity
- expose failures in the past and points of potential disinterest coming from the side of youth while dealing with the topic of anti-discrimination
- discuss new advantages that the diversity approach brings into anti-discrimination youth work and to dissemination of information
- encourage youth workers to use the diversity approaches when planning and implementing activities with youth
- practice newly adopted methods on youth workers' experienced cases; discuss and understand the importance of visible dissemination of the results of every single anti-discrimination project

PARTICIPANT'S PROFILE

- possibility a) the same person as for the CME, depending on the country a volunteer/ young professionals or similar
- possibility b) one or two volunteers/ young professionals or similar (depending on the country)
- fully available to attend the TC from 28th of October – 4th of November 2015
- with strong motivation and interest in the themes Youth Work and Diversity
- experienced in Youth Work / Social Work, e.g. engaged as youth worker / educator
- / facilitator
- having a good command of English

APPLICATION PROCESS

Applications are accepted through the partner organisations.
A participation fee visible in the list below is charged for participation in the TC.
The amount is paid in cash by the participant on the spot (arrival day, registration and check in).



TRAVEL COSTS

According to the new rules within the Programme Erasmus+ / Youth in Action we will reimburse the travel costs for the TC on the basis of the cheapest possibilities, e.g. second class railway tickets, APEX-flights etc., accompanied by the receipt of complete and original tickets, invoices, bills, receipts, boarding cards etc. upon a certain "contribution to the travel costs of participants, from their place of origin to the venue of the activity and return".

This contribution is "based on the travel distance per participant. Travel distances must be calculated using the distance calculator supported by the European Commission". Here you find the maximum contribution to travel costs for ONE participant per country from home town to Weimar and back:

Country	Partner Organisation	Number of participants	Fee	Max. contribution per person (€)
Albania	Center of Non-formal Education and Lifelong Learning	2	35	275
BiH	Association "Youth Volunteers"	1	35	275
BiH	Red Cross of Novo Sarajevo	1	35	275
Bulgaria	National association of resource teachers (NART)	1	45	275
Czech Rep.	Tmelnik	1	45	180
Estonia	Eesti People to People	1	45	275
Estonia	IINVOLVED ngo/ mtü	1	45	275
France	AMSED	1	55	275
Germany	EJBW	2	55	-
Germany	Gustav-Stresemann -Institut Bonn (GSI)	2	55	180
Germany	Jugendkulturarbeit e.V.	1	55	180
Greece	Educational Eduvation	1	55	275
Greece	YouthNet Hellas	1	45	360
Hungary	COMPASS	2	45	275
Italy	ComeUnaMarea Onlus	2	55	275
Kosovo	Center for Economic and Social Development (CESD)	2	35	275
Lithuania	RJOS "Apvalus stalas"	2	45	275

Country	Partner Organisation	Number of participants	Fee	Max. contribution per person (€)
Macedonia	Association for Education and Art STUDIO 212 TETOVO	2	35	275
Poland	Fundacja Rodowo	2	45	275
Portugal	GABINETE DA JUVENTUDE Montijo	1	55	360
Portugal	Dinamo	1	55	360
Romania	Support for Youth Development	2	45	275
Serbia	EDIT Centre	2	35	275
Slovenia	Zavod Nefiks	2	45	275
Sweden	IFALL	2	55	275



PROGRAMM

Wednesday, 28.10.	Thursday, 29.10.	Friday, 30.10.	Saturday, 31.10.	Sunday, 1.11.
	opening & introduction	programme as decided in CME	programme as decided in CME	programme as decided in CME
arrival	'e.g. starting with myself - reflecting myself	programme as decided in CME	programme as decided in CME	programme as decided in CME

Monday, 2.11.	Tuesday, 3.11.	Wednesday, 4.11.
programme as decided in CME	'Diversity approach' in the programme Erasmus+/YiA	open questions & final evaluation
e.g. visiting NGOs, institutions	Planning, implementing, evaluating youth projects	departure

CHECK LIST FOR TRAVEL REIMBURSEMENT

REGULAR AIR TICKETS MUST BE ACCOMPANIED

- by the original invoice (signed and stamped)/receipt/pay order/proof of payment
- by the boarding pass(the small ticket stub you receive before boarding the plane)
- the prices stated in the invoices, receipts etc. must coincide with the price on the ticket.

E-Tickets must be

- printed out and include your name , the exact fare you paid, details of your flight on the same page
- be provided along with the credit card receipt for the payment or a copy of your bank statement (clearly showing the payment has been made)
- given in with the boarding pass (the small ticket stub you receive before boarding the plane)

NOTE: Some airlines print 'passenger receipt' at the top of the cardboard ticket. It is not accepted as a receipt of proof of payment. Therefore, if you book your tickets online, please, make sure to print out the e-mail you receive from the airline company upon the payment, stating how much and how you paid.

TRAIN/BUS TICKETS MUST SHOW VISIBLE

- arrival and departure time as well as the price (+invoices if available)

OTHER IMPORTANT DETAILS:

- **Booking paper alone is not enough (we need the invoices)**
- **Missing or lost tickets are not reimbursed**
- **Any costs for taxi are not reimbursed**
- **Return tickets must be bought in advance before the journey**

Following the guidelines of the Erasmus+/YIA Programme and internal regulations the travel must be released by the participants on the direct way within maximum 2 days. In case of long pauses or indirect routes (holiday travel), there is no reimbursement of travel costs! Reimbursement is done in Euro.

After the TC, please send us back all your complete travel documents in ORIGINAL by post mail as well as your bank account details (name of account holder, name of the bank, IBAN code, BIC/SWIFT code) **November, 20th 2015 to:**

Europäische Jugendbildungs- und
Jugendbegegnungsstätte Weimar (EJBW)
Markus Rebitschek
Jenaer Str. 2/4
D-99425 Weimar, Germany

TRAVELLING TO THE EJBW

ARRIVAL BY PLANE

Weimar is easily reachable from Airports Frankfurt/Main as well as Berlin. From these Airports to Weimar you can go by train. For special offers (29€ for one way by ICE) at least 4 days in advance please look at the homepage from 'Deutsche Bahn':

www.bahn.de/i/view/GBR/en/index.shtml

Much cheaper and comfortable are meanwhile new bus connections to Erfurt and / or Weimar from all major German cities. They offer special prices ranging from 9 EUR up to 30 EUR for the trip to Erfurt and / or Weimar. Here you can find all information (portals comparing all lines and prices):

www.busliniensuche.de & www.fernbusse.de

In case you are taking a bus to Erfurt please continue your journey by using regional trains 'Deutsche Bahn' to Weimar:

www.bahn.de/i/view/GBR/en/index.shtml

FROM THE STATION TO THE EJBW

Arrival by train: Take bus no. 1 (direction: Ehringsdorf) from outside the railway station to the Goetheplatz - change to bus no. 2 (direction: Bodelschwingstraße) or bus no. 9 (direction: Süßenborn) and disembark at the bus stop "Hellerweg / EJBW".

Single fare 1, 90 Euro

Single fare (4-ticket-set) 6, 30 Euro

ARRIVAL BY CAR

From the A4 motorway take the exit to "Apolda". Follow the B87 in the direction of Apolda until you reach the main traffic lights at Umpferstedt. Turn left towards Weimar on the B7 and follow the road into Weimar until you reach us on the Jenaer Straße.

ACCOMMODATION

We'll stay in the facilities of the Foundation the European Youth Education and Meeting Centre in Weimar. The accommodation of participants is in the EJBW in double and three bed rooms including full board with snacks, coffee & tea. Within EJBW several seminar rooms, workshop for creative work and free space for activities outside are at disposal. (www.ejbweimar.de) Please bring your own towels (bed sheets will be provided).

The facilities include:

- 134 beds in single, two and three bed rooms with shower and toilet
- 15 modern, fully-equipped seminar rooms (ranging from a conservatory for 4 people to a cultural room for 80 people)
- computer room / two internet terminals
- an elegant fireside room / sports facilities and playground



EVALUATION MEETING

SUMMER/AUTUMN 2016

THE OBJECTIVES

- have a detailed look on all ongoing and past processes during the project implementation
- carefully evaluate (supported by the monitoring team) all single events step by step, analyse the preconditions, the implementation of each event and of the overall project and the results
- further work on the final project documentation
- develop follow-up projects among the present partner promoters

PARTICIPANT'S PROFILE

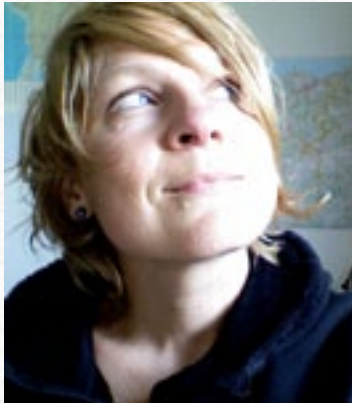
- older than 18 years
- already participating in CME and/or TC
- fully available to attend the whole evaluation meeting
- with strong motivation and interest in the themes Youth Work and Diversity
- experienced in Youth Work / Social Work (with the capability to make decisions on general orientation), e.g. engaged as youth worker / educator / facilitator / project manager / board member
- able to make agreements on behalf of its sending organisation
- having a very good command of English

The Evaluation Meeting “Non-Formal Education and Diversity in European Youth Work” will happen in **summer or autumn 2016**. The place and date is not yet fixed because we will implement two additional Regional Experts Panels on the theme of the overall project in **springtime 2016**. Depending on the results for place and date of them we'll fix the date for the Evaluation Meeting.



THE TRAINERS

EVELINA TAUNYTE



"Have you ever made an experience of taking a flight to a distant exotic country and realising that it looks and feels familiar, "same same, but different", as they say in the South East Asia? But just spend a day with somebody who does not have the same amount of money and the world will look different to you. There are kids in Salvador (Brasil), that have never been to the sea, because they do not have money to take the bus to the shore! Diversity for me is interesting not from the perspective which country people come from, but with what possibilities and opportunities they are equipped in different parts of society and what they do with and out of it. Having learned to observe and to change perspective you might see your own living reality with more diversity that you thought!" Throughout her career as an educator and trainer Evelina delivered various training courses on diversity. However her knowledge is based on the reflection of first hand living and working experience in various places of the world, such as the Middle East, Caucasus, Turkey, Latin America, South East Asia and Europe.

KEREM ATASEVER

Since 1994 while studying cultural work Kerem has been working in the nonformal civic youth education especially in subjects of diversity, Gender Mainstreaming and Antiziganism/Antiromaism. Beside he worked in the opera in Berlin, had a pub, a cinema and a cultural magazine. Today he works as a pedagogue with children, youth and multipliers in the education center Kaubstraße in Berlin and is part of the education team Berlin-Brandenburg. He wrote several publications, professional articles and literature, and - no surprise - he is a story teller, as well.

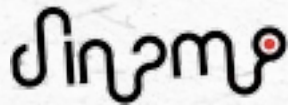
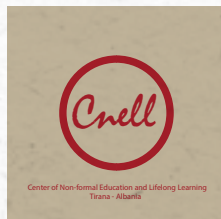


MARGAUX RICHEL



As a free-lance intercultural trainer, moderator and story-teller since 2006, Margaux wants to raise awareness for diversity, inclusion, anti-racism, languages, oral traditions and rituals of cultures. She develops, implements and manages international exchange program and other projects. Art is deeply present in her approach because we need to look for new ways to connect over language barriers. She is interested in working with people and projects using non formal education, arts and body-related techniques (such as theatre, dance and music) in intercultural work to deepen social, historical or political issues. Especially she has experiences with cross-cultural skills, teambuilding, conflict resolution, youth participation and civic education.

PARTNER ORGANISATIONS





NON-FORMAL EDUCATION & DIVERSITY IN EUROPEAN YOUTH WORK

Non-Formal Education and Diversity in European Youth Work:
Subjects - Methods - Exchange

NOVI SAD, SERBIA
4th - 8th of July 2015

WEIMAR, GERMANY
28th October - 4th of November 2015

EDITOR

Europäische Jugendbildungs- und
Jugendbegegnungsstätte Weimar (EJBW)
Markus Rebitschek
Jenaer Str. 2/4
D-99425 Weimar, Germany

DESIGN

www.kridders.de